

All That Is Within Me

From the RiverSpring® volume:
Worship You

Words and Music by
JEFF FERGUSON
and **REGI STONE**
Arranged by
JIM HAMMERLY

With conviction ♩ = 58

Musical notation for the first system of the piano accompaniment. It consists of a grand staff with a treble clef on the upper staff and a bass clef on the lower staff. The key signature is one sharp (F#) and the time signature is 4/4. The tempo is marked as ♩ = 58. The first measure has a C_6^9 chord above it. The second measure has an Am^{11} chord above it. The dynamic marking *mp* is placed below the first measure.

Musical notation for the second system of the piano accompaniment. It consists of a grand staff with a treble clef on the upper staff and a bass clef on the lower staff. The key signature is one sharp (F#) and the time signature is 4/4. The first measure has a C_6^9 chord above it. The second measure has an Am^{11} chord above it. A measure rest for 3 measures is indicated at the beginning of the system.

Musical notation for the vocal line, starting at measure 5. It is written on a single staff with a bass clef and a key signature of one sharp (F#). The dynamic marking *p* is placed below the first measure. A box containing the number 5 is placed above the first measure. The lyrics "MEN" are written above the first measure.

All that is with-in me, all that is with-in me,

Musical notation for the piano accompaniment during the vocal line. It consists of a grand staff with a treble clef on the upper staff and a bass clef on the lower staff. The key signature is one sharp (F#). The first measure has a $G^2(\text{no}3)$ chord above it. The second measure has an Em^9 chord above it. The dynamic marking *p* is placed below the first measure. A measure rest for 5 measures is indicated at the beginning of the system.

Permission granted – all photocopying rights within your church.
Copyright © 2004 Jeff Ferguson Music/BMI/
Experience Worship Music Publishing / ASCAP
and Belden Street Music Publishing / ASCAP.
All rights reserved. Used by permission.
Published by RiverSpring Music • 1 866 859-7622





all that is — with-in — me will wor - ship you. —

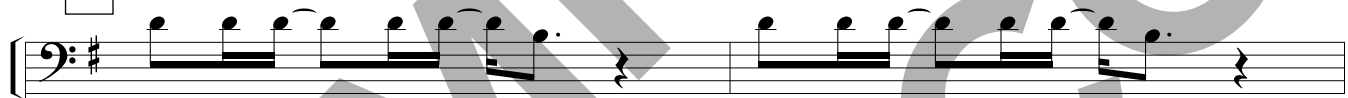
CM⁹

G/B

Am⁷ D/A Am⁹ Am⁷/D

7

9



All that is — with-in — me, all that is — with-in — me,

G²(no3)

Em⁹

9



all that is — with-in — me will wor - ship you. —

CM⁹

Bm⁷

Am⁹

D⁷_{sus}

D²

11

LADIES

mp

All that is — with-in — me, all that is — with-in —

All that is — with-in — me, all that is — with-in — me,

mp

$G^2(\text{no}3)$ Em^9

13

— me, will wor - ship you. —

all that is — with-in — me will wor - ship you. —

CM^9 Em^9 Am^7 D/A Am^9 Am^7/D

15

17

All that is — with - in —

All that is — with - in — me,

$G^2(\text{no}3)$ $B7(\#9)$

17

— me, all that is— with-in— me, will

all that is— with-in— me, all that is— with-in— me will

Em⁹ FM⁷/G CM⁹ Bm⁷ Em⁹

18

wor - ship you. ——— *mp* I give you my heart,

wor - ship you. ———

Am⁹ D⁷_{sus} D C/D

20

22 *(mf - 2nd time)*

I give you my soul; ——— show me your will, —

G² CM⁷(no3)/E D²(no3)/F# E²(no3)/G# Am⁷

mp-mf

22

I give you con - trol. _____ Wher - ev - er you lead, _____

24

I'll an - swer the call. _____ I lay down my life, _____

26

1. *sub. mf* (to meas. 22)
I give you my — all. _____ I give you my heart, _____

28

6

2.
rit.

31

f

All that is— with-in— me,

2.
D²(no3)/F[#]

E^{b2}(no3)/G F²(no3)/A

D^{b2}(no3)/A^b

Fm7

rit.

f

30

all that is— with-in— me,

all that is— with-in— me will

B^bm⁹

Fm/A^b

G^bM⁹

B^bm⁹

32

rall.

a tempo

ff

wor - ship you.—

All that is— with-in— me,

E^bm⁷ A^b/E^b E^bm⁹ E^bm⁷/A^b

A^b/G^b

E²(no3)

G[#]7^(#9)_{5 3}

rall.

ff a tempo

34

all that is — with-in — me, all that is — with-in — me will

C#m9 DM7/E AM9 G#m7 C#m9

36

wor - ship you.

rit.

F#m9 B7sus

38

40 *slowing to end* *p*

All that is — with-in — me, all that is — with-in —

p

All that is — with-in — me, all that is — with-in — me,

E2(no3) C#m9

slowing to end

40

— me will wor - ship you.—

all that is— with-in— me will wor - ship you.—

AM⁹ C#m⁹ F#m⁷ B/F# F#m⁹/E

DM7(9)

