

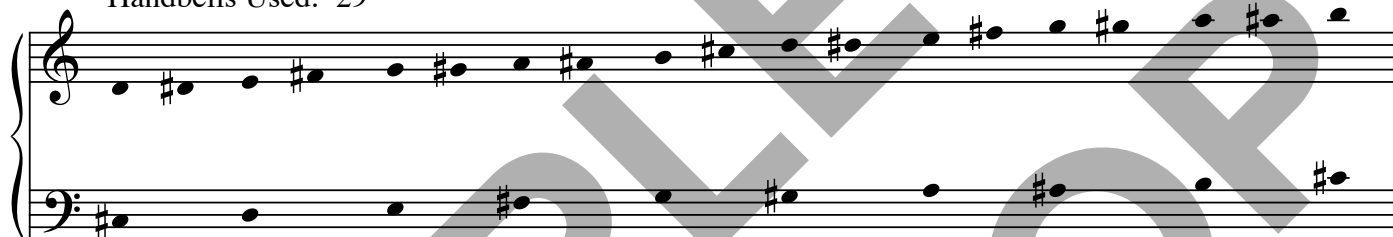
Crown Him With Many Crowns

(Handbells)

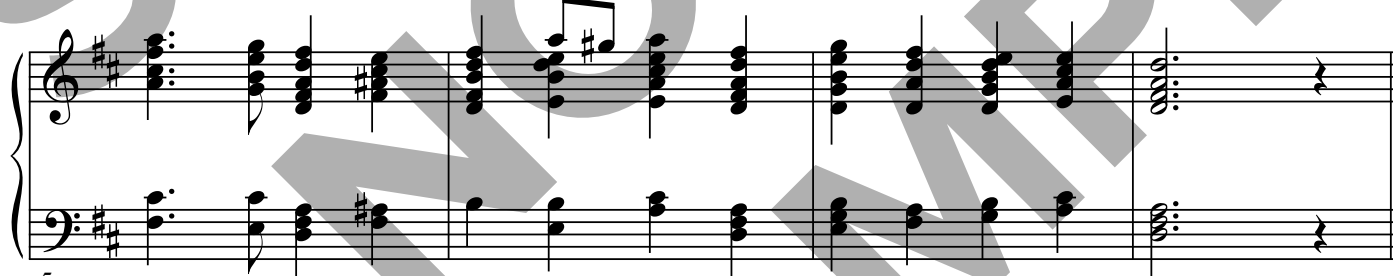
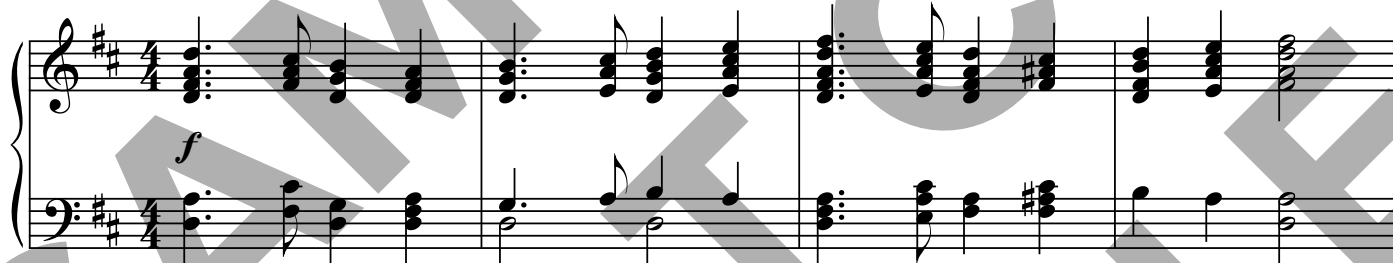
From the Worship Today® volume:
We Declare to You

Music by **GEORGE J. ELVEY**
Arranged by
DON MICHAEL DICIE

3 Octaves
Handbells Used: 29



Majestically (♩ = 96-100)



5



9

Permission granted – all photocopying rights within your church.
Arrangement Copyright © 2010 RiverSpring Music Publishing (BMI)
(admin. by Evergreen Copyrights, P.O. Box 24149, Nashville, TN 37202)
All rights reserved. Used by permission.
Published by Worship Today Music Service • 1 (866) 859-7622

System 13-16: Treble and bass staves with chords and single notes. Measure 13 starts with a treble staff chord and a bass staff chord. Measure 14 has a treble staff chord and a bass staff chord. Measure 15 has a treble staff chord and a bass staff chord. Measure 16 has a treble staff chord and a bass staff chord.

13

System 17-20: Treble and bass staves with chords and single notes. Measure 17 starts with a treble staff chord and a bass staff chord. Measure 18 has a treble staff chord and a bass staff chord. Measure 19 has a treble staff chord and a bass staff chord. Measure 20 has a treble staff chord and a bass staff chord.

17

System 21-24: Treble and bass staves with chords and single notes. Measure 21 starts with a treble staff chord and a bass staff chord. Measure 22 has a treble staff chord and a bass staff chord. Measure 23 has a treble staff chord and a bass staff chord. Measure 24 has a treble staff chord and a bass staff chord.

21

System 25-28: Treble and bass staves with chords and single notes. Measure 25 starts with a treble staff chord and a bass staff chord. Measure 26 has a treble staff chord and a bass staff chord. Measure 27 has a treble staff chord and a bass staff chord. Measure 28 has a treble staff chord and a bass staff chord.

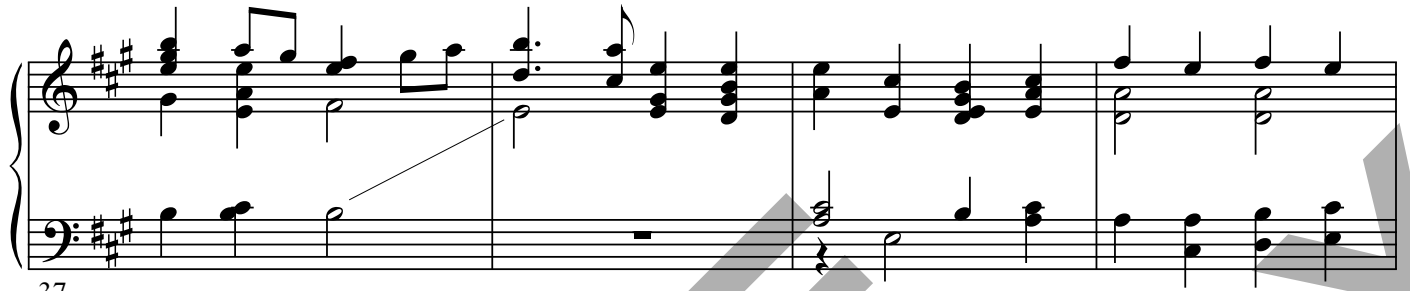
25

System 29-32: Treble and bass staves with chords and single notes. Measure 29 starts with a treble staff chord and a bass staff chord. Measure 30 has a treble staff chord and a bass staff chord. Measure 31 has a treble staff chord and a bass staff chord. Measure 32 has a treble staff chord and a bass staff chord.

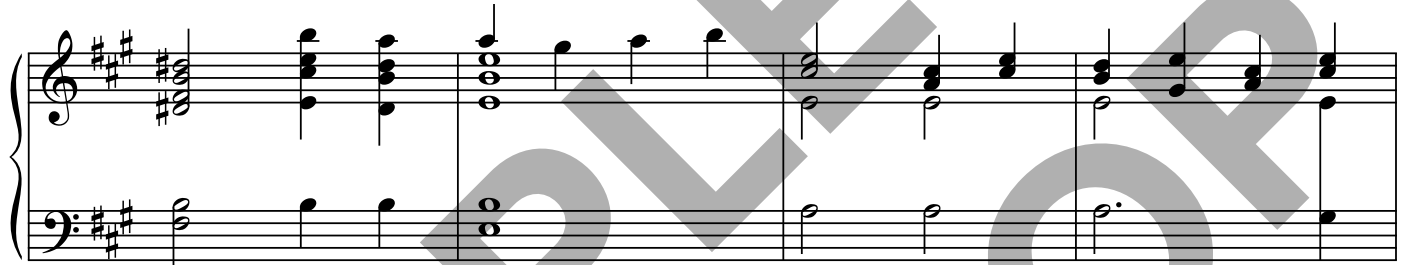
29

System 33-36: Treble and bass staves with chords and single notes. Measure 33 starts with a treble staff chord and a bass staff chord. Measure 34 has a treble staff chord and a bass staff chord. Measure 35 has a treble staff chord and a bass staff chord. Measure 36 has a treble staff chord and a bass staff chord.

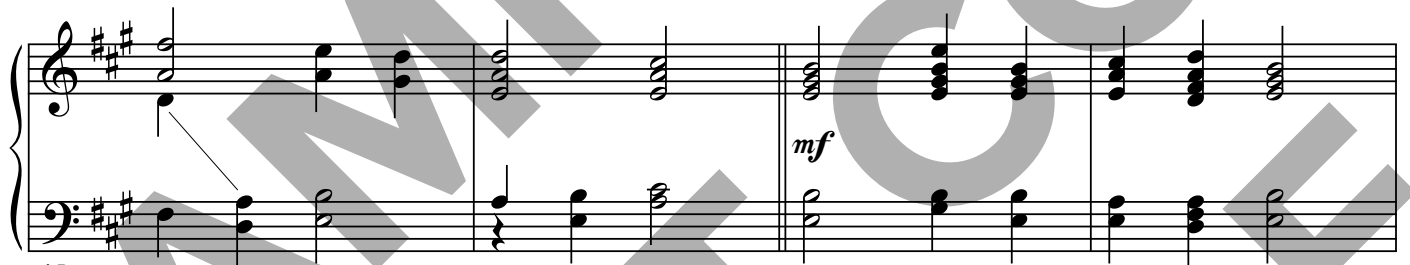
33



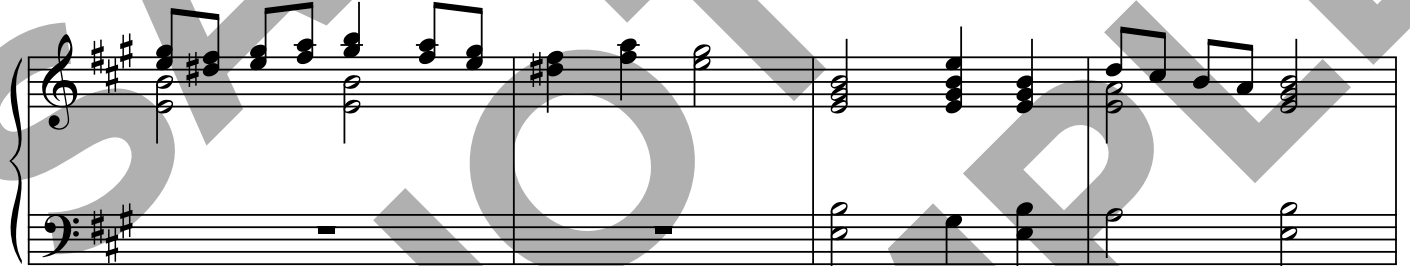
37



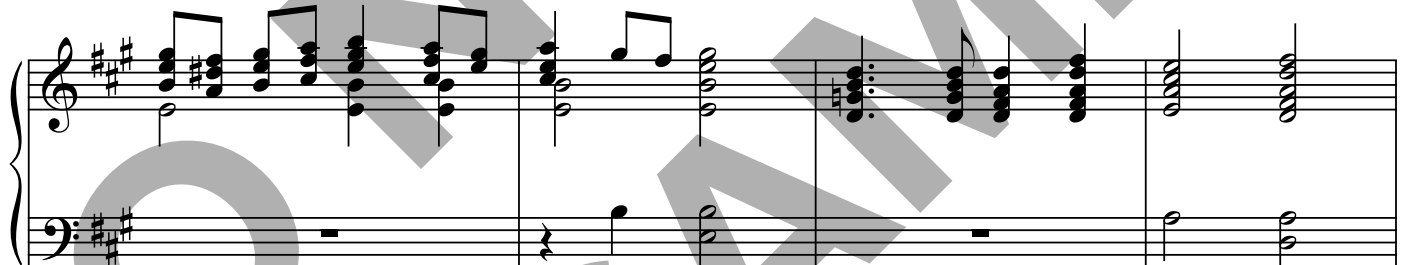
41



45



49



53



57

Majestically

4

61

f

This system contains measures 61 through 64. It begins with a treble clef and a key signature of two sharps (F# and C#). The music features dense block chords in the right hand and single notes or dyads in the left hand. A dynamic marking of *f* (forte) appears at the start of measure 63. The system concludes with a repeat sign.

65

This system contains measures 65 through 68. The musical texture continues with block chords in the right hand and single notes in the left hand. The system ends with a repeat sign.

69

This system contains measures 69 through 72. The right hand features more active eighth-note patterns within the block chords. The system ends with a repeat sign.

73

This system contains measures 73 through 76. The music continues with block chords and single notes. The system ends with a repeat sign.

77

ff

This system contains measures 77 through 80. The right hand features a series of wavy lines, indicating a tremolo or rapid oscillation. A dynamic marking of *ff* (fortissimo) appears in measure 79. The system ends with a repeat sign.

81

This system contains measures 81 through 84. The music continues with block chords and single notes. The system ends with a repeat sign.