

Hallelujah

From the Worship Today® volume:
I Will Believe

(Children's Choir)

Words and Music by
PETE CARLSON
Arranged by
JEFF LIPPENCOTT

Gently ♩ = 108

G Em7 C Dsus D G Em7

mp

This system shows the piano introduction for the first system of the song. It consists of two staves: a treble clef staff and a bass clef staff. The key signature is one sharp (F#) and the time signature is 4/4. The tempo is marked 'Gently' with a quarter note equal to 108 beats per minute. The music begins with a piano introduction of 8 measures, with dynamics marked *mp*. The chords are G, Em7, C, Dsus, D, G, and Em7.

9 *mp-mf*

Hal-le-lu-jah, hal-le-lu-jah, glo-ry to God in the

C Dsus D7 G Em7 C

mp-mf

This system contains the vocal melody and piano accompaniment for the second system. It starts with a vocal line on a treble clef staff, beginning at measure 9. The lyrics are 'Hal-le-lu-jah, hal-le-lu-jah, glo-ry to God in the'. The piano accompaniment is on a grand staff (treble and bass clefs). The key signature is one sharp and the time signature is 4/4. The dynamics are marked *mp-mf*. The chords are C, Dsus, D7, G, Em7, and C.

high - est! Hal-le-lu-jah, hal-le-lu-jah, born to us this day.

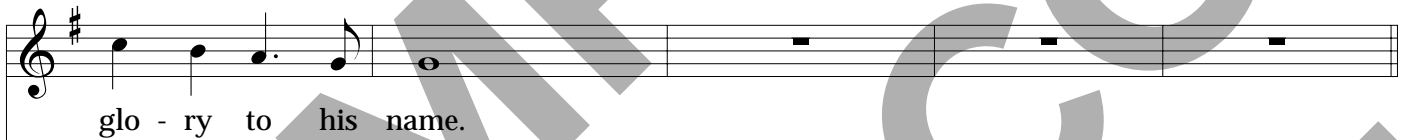
G/D D G Em7 C Dsus D

This system contains the vocal melody and piano accompaniment for the third system. It starts with a vocal line on a treble clef staff, beginning at measure 12. The lyrics are 'high - est! Hal-le-lu-jah, hal-le-lu-jah, born to us this day.'. The piano accompaniment is on a grand staff (treble and bass clefs). The key signature is one sharp and the time signature is 4/4. The dynamics are not explicitly marked but follow the previous system. The chords are G/D, D, G, Em7, C, Dsus, and D.



Am G/B C A/C# Am

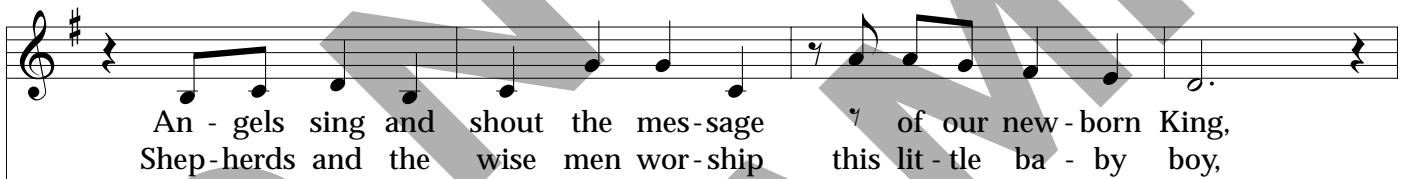
17



C/D D G Em C² CM⁷ G/D D

22

27



G Am⁷ D G Gsus G

27

lift - ing up thanks to heav - en for the gift he brings.
 "God with us," and the rea - son for our end - less joy.

Am⁷ D Dsus D

31

We sing prais - es to the Son of God!
 We sing prais - es to the Lord of all!

(2nd time go on)

C G/B Am⁷ Am⁹ D⁷_{sus} D

35

Hal - le - lu - jah, hal - le - lu - jah, glo - ry to God in the high - est!

G Em⁷ C G/D D

40

Hal-le-lu-jah, hal-le-lu-jah, born to us this day. He has come to

G Em7 C Dsus D Am

44

give us hope and God's a-maz-ing grace. Hal-le-lu-jah, glo-ry to his

G/B C A/C# Am C/D D

49

name!

G Em C2 C G/D D7 G

rit.

54