

I Am Not Alone

From the Worship Today® volume:
We Would See Jesus

(Praise & Worship)

Words and Music by
REGI STONE
and **CHRISTY SUTHERLAND**

Arranged by
DAVE WILLIAMSON

Smoothly ♩ = 60

mp

*C*²/*E* *B*^{b2}/*D* *G**m*¹¹ *C*

FEMALE SOLO *mp*

The road I — have tak - en has been hard, for

*F*² *B**b* *B**b*/*C* *F*

ev - 'ry time — I stum - ble there's a scar. I've

*B**b* *B**b*/*C* *D**m*⁹

Permission granted – all photocopying rights within your church.

Copyright © 2005 Belden Street Music Publishing/
Experience Worship Music Publishing/ASCAP/
Songs of Universal/Lavaca Bay Music/BMI.

All rights reserved. Used by permission.

Published by Worship Today Music Service • 1 866 859-7622

seen the sky in pie - es all a - round, and

B \flat A/C \sharp Dm C/D Dm

those I've trust - ed most have let me down. I'm not a -

CHOIR
mp

Gm11 F 2 /A B \flat 2 B \flat /C

mf (2nd time)

lone, e - ven when it seems all hope is gone.

F C/D Dm 7 Gm 7 F 2 /A

mp-mf

He's giv - en me au - thor - i - ty — and

Bb2 Bb/C F C/D Dm7 Bb2 Dm7

14

pow - er o - ver ev - 'ry — en - e - my. I be-

Gm7 F/A G2/B

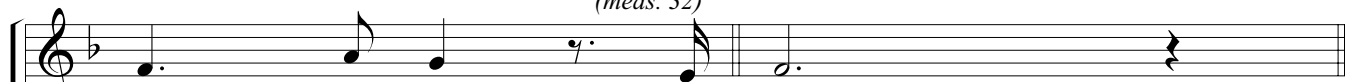
17

lieve what he said; — on his Word I will stand.

A/C# Dm7 C2 Bb2

19

2nd time to Coda ⊕
(meas. 32)



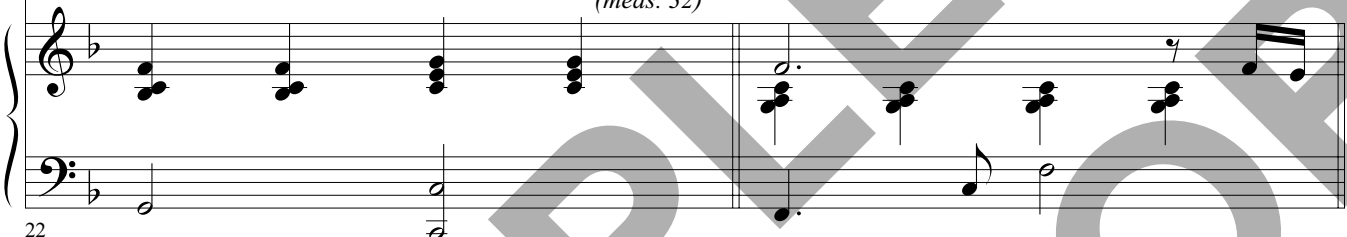
I am not a - lone.

Gm11

C

2nd time to Coda ⊕
(meas. 32)

F2



LADIES
mp



It's not al - ways eas - y to be - lieve that

Bb

Bb/C

F

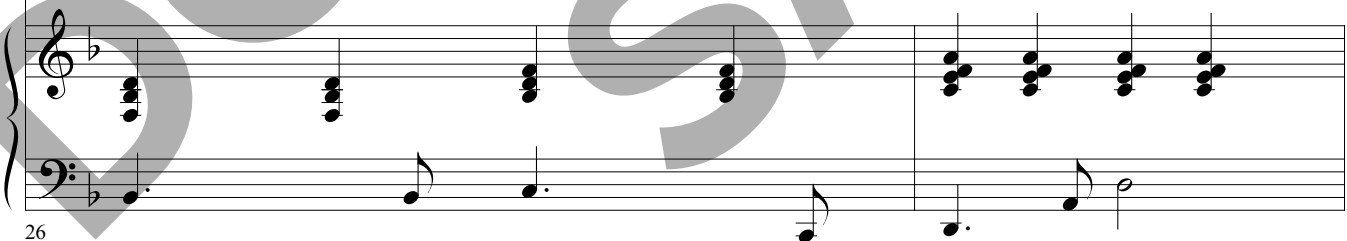


he would e - ven take the time for me. Yet his

Bb

Bb/C

Dm9



building

wings are wrapped — a-round — me like a shield a-against the storm. — He

building

B \flat A/C \sharp Dm C/D Dm

28

mf D.S. al Coda (to meas. 12)

holds me like — a child, and keeps me warm. — I'm not a -

Gm¹¹ F²/A B \flat B \flat /C D.S. al Coda (to meas. 12)

30

⊕ CODA *f*

lone. He's nev - er made — a prom - ise he — can't

⊕ CODA F D \flat 2 E \flat 2

32

keep. He's faith - ful to — be ev - 'ry-thing — I need! —

F F² F D^b2 E^b2

34

ff

I'm not — a - lone,

C^{sus} F C/D Dm⁷

ff

36

e - ven when — it seems all hope is gone. — He's giv - en

Gm⁷ F²/A B^b2 B^b/C

38

me au - thor - i - ty and

F C/D Dm7 Bb2 Dm7

40

pow - er o - ver ev - 'ry en - e - my. I be-

Gm7 F/A G2/B

42

lieve what he said; on his Word I will stand.

A/C# Dm7 C2 Bb2

44

sub. mp

Musical staff with treble clef, key signature of one flat, and a whole rest followed by a melodic line.

I am not a - lone.

Musical staff with bass clef, key signature of one flat, and a whole rest.

Piano accompaniment system with treble and bass clefs. Treble clef contains chords and a melodic line. Bass clef contains a bass line. Chords: Bb2, Gm7, C, Dm, C/D, Dm. Includes *sub. mp* marking and measure number 47.

Musical staff with treble clef, key signature of one flat, and a melodic line.

I am not a - lone.

Musical staff with bass clef, key signature of one flat, and a melodic line.

Piano accompaniment system with treble and bass clefs. Treble clef contains chords and a melodic line. Bass clef contains a bass line. Chords: Gm7, C, Bb2, F/A, F2/A, Gm7. Includes measure number 50.

Musical staff with treble clef, key signature of one flat, and a whole rest.

Piano accompaniment system with treble and bass clefs. Treble clef contains chords and a melodic line. Bass clef contains a bass line. Chords: Bb/C, F. Includes *rit.* marking and measure number 54.

