

Jesus' Family Tree

From the Worship Today® volume:
Sing We Now of Christmas

(Children's Choir)

Words and Music by
KRISTIE BRASELTON
Arranged by
KRIS CRUNK

With energy, gradually getting faster ♩ = 82-114

F B \flat F F C F F F/A C/G

mf

The piano introduction is in 4/4 time, starting with a mezzo-forte (*mf*) dynamic. It features a steady eighth-note accompaniment in the bass line and a more active melody in the treble line, including some sixteenth-note runs. The key signature has one flat (B-flat).

SOLO
mf

A - bra - ham, I - saac, Ja - cob, Ju - dah Phe - rez, Ze - rah, Ez - rom, A - ram, Am -

F B \flat F F C

The solo vocal line is marked 'SOLO' and 'mf'. It begins with a quarter rest followed by a series of eighth notes. The lyrics are: 'A - bra - ham, I - saac, Ja - cob, Ju - dah Phe - rez, Ze - rah, Ez - rom, A - ram, Am -'. The piano accompaniment consists of chords in the treble and a simple bass line. The key signature remains one flat.

min - i - dab, Nah - shon, Sal - mon, Bo - az O - bed, Jes - se, and Da vid the King. —

F B \flat F B \flat F C F

The vocal line continues with the lyrics: 'min - i - dab, Nah - shon, Sal - mon, Bo - az O - bed, Jes - se, and Da vid the King. —'. The piano accompaniment continues with chords and a bass line. The key signature remains one flat.

Permission granted – all photocopying rights within your church.
Copyright © 2008 RiverSpring Music Publishing/BMI
(admin. by ICG, P. O. Box 24149, Nashville, TN 37202).
All rights reserved. Used by permission.
Published by Worship Today Music Service • 1 866 859-7622

CHOIR and SOLO

— This is how the ba-by Je-sus got to the Na-tiv-i-ty.

F F/A B \flat F B \flat C

8

Man-y years and man-y branch-es, this is Je-sus' fam-'ly tree.

F B \flat F F C F F C F

11

SOLO

So, So - lo - mon, Re - ho - bo - am, A - bi - jah, A - sa, Je -

C F B \flat F

14

ho-sha-phant, Jo - ram, Uz - zi - as, Jo - tham, A - haz, Ez - e - ki - ah, and Ma - nas - ses,

F C F B♭ F

16

A - mon, Jo - si - as, Je - cho - ni - as. ———

CHOIR and SOLO

This is how the ba - by Je - sus

B♭ F C F F F/A B♭ F

18

got to the Na - tiv - i - ty. Man - y years and man - y branch - es,

B♭ C F B♭ F

21

this is Je - sus' fam - 'ly tree. _____ So

 F C F F C F C

23

f

 Sal - a - thiel, Zo - ru - ba - bel, A - bi - ud, El - i - a - kim, A - zor, Sa - dok, and A - chim, El -

 F B \flat F F C

26

i - ud, El - e - a - zer, Mat - than, Ja - cob, Jo - seph and Mar - y in Beth - le - hem. _____

 F B \flat F B \flat F C F

28

— This is how the ba - by Je - sus got to the Na - tiv - i - ty.

F F/A B \flat F B \flat C

30

Man - y years and man - y branch - es, this is Je - sus' fam - 'ly tree.

F B \flat F F C F

33

This is how the ba - by Je - sus got to the Na - tiv - i - ty.

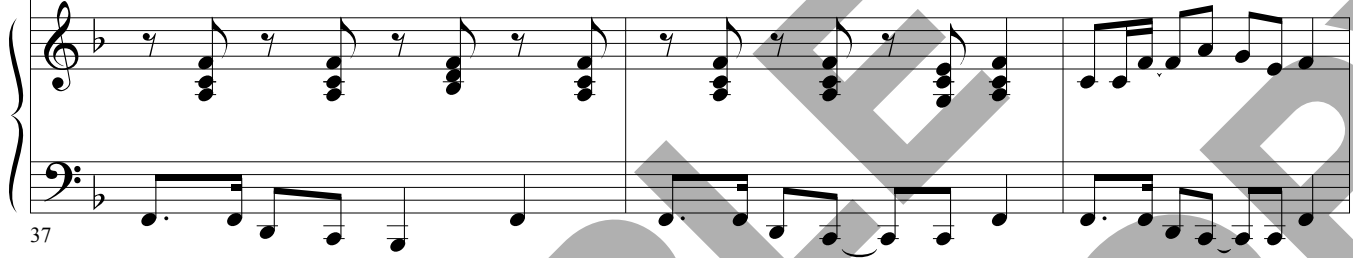
B \flat F B \flat C

35



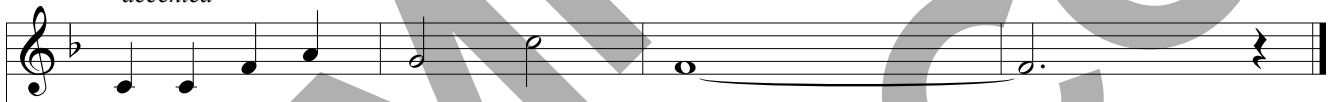
Man - y years and man - y branch - es, this is Je - sus' fam - 'ly tree. —

F B♭ F F C F F C F



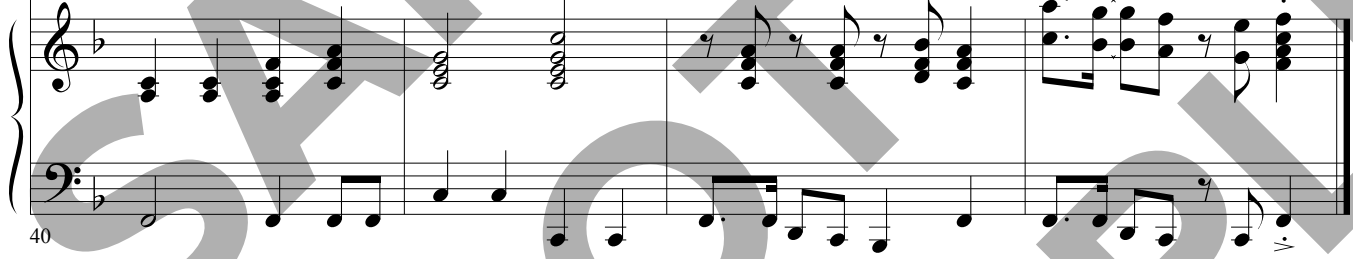
37

accented



This is Je - sus' fam - 'ly tree. —

F C F B♭ F F C F



40