

The Weight of the Cross

From DiscoverWorship.com

Words and Music by
CHRISTOPHER MACHEN
Arranged by
CAMP KIRKLAND
and TOM FETTKE

Tenderly (♩ = 66)

Piano introduction in G major, 4/4 time. The music is marked *mp*. The first measure has a G^2 chord. The second measure has $Cm6$ and G chords. The third measure has a G^2 chord. The melody consists of quarter and eighth notes.

Vocal and choir parts. The vocal line is marked *SOLO mp*. The lyrics are: 1. The crowd pressed in to see this Man who (2. His) face was scarred, His bod - y bruised, His. The choir part is marked *CHOIR 2nd time only mp* and consists of a long note with the syllable "Ooo".

Piano accompaniment for the second system. The first measure has Cm and G chords. The second measure has a G^2 chord. The music continues with a melody in the right hand and accompaniment in the left hand.

4

Permission granted – all photocopying rights within your church.

Copyright © 1997 by Pilot Point Music (ASCAP).

Administered by The Copyright Company, 40 Music Square East, Nashville, TN 37203.

All rights reserved. Used by permission.

Published by Discover Worship • 1 (866) 859-7622



stood con-demned to die. A Man they once pro-claimed as King, they
 head was crowned with thorns. The crowd now jeered and cursed His name, the

Ooo

Cm6 G G²

6

now would cru - ci - fy. They laid a cross up - on His back, and
 ob - ject of their scorn. He nev - er spoke a word to them, the

WOMEN

Ooo

Cm6 G Am⁷

8

cresc.

pushed Him up_ the road. The path would lead to Cal - va - ry- He
 si - lent Lamb of God. This man of sor - row bore the cross; He

CHOIR

He

D/E Em Am7(4) G²/B

cresc.

10

mf rit. mp

fell be - neath the load. And
 chose to car - ry on. But

mf

chose to car - ry on.

C² D^{sus} D C/D D

mf rit.

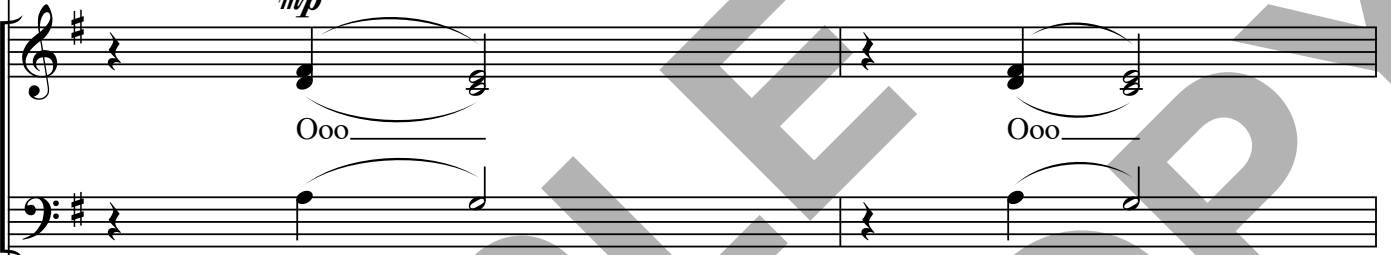
12

a tempo



as I watched I un - der - stood the bur - den that He bore was
some - how in His eyes I saw a love be - yond the pain, as

mp



Ooo

Ooo

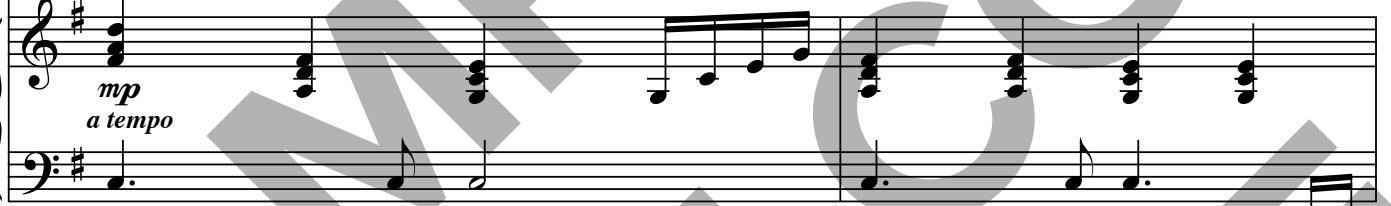
D
C

C

D
C

C

mp
a tempo



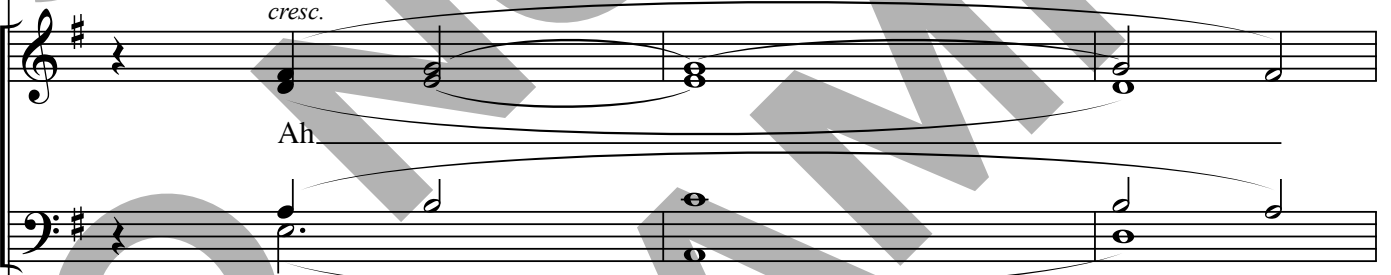
14

cresc.



more than just a heav - y tree; the weight _____ was so much more. _____
if He knew His sac - ri - fice and loss _____ would be my gain. _____

cresc.



Ah

D
E

Em

Am⁷

G
D

D

cresc.



16

The weight of the cross was the weight of my sin,

Chords: C, D, G2, G2/B, C2

Measure numbers: 19

not the weight of the tree that was car-ried by

Chords: G2/B, Am7, C, D

Measure numbers: 23

Him. My guilt and dis - grace Je-sus bore in my

Chords: G, F/G, G, F/G, G, C, G/B, Am7

Measure numbers: 26

unis. 3 3

place, on Cal-va-ry's road, 'neath the weight of the

Em7 G D CM7 G D Cm6/D

30

1. (to meas. 5)

rit. *SOLO mp*

cross. 2. His

1. (to meas. 5)

G² Cm6/G G² Cm/G

rit. *mp*

34

2.

f 3

cross. The weight of the cross

This system contains the first two staves of music. The vocal line (treble clef) begins with a fermata and a '2.' marking. It features a triplet of eighth notes (Bb, A, G) followed by a quarter note (F) and a half note (E). The piano accompaniment (bass clef) mirrors this melody. A dynamic marking of *f* is placed above the first triplet. A large watermark 'SAMPLE COPY' is overlaid on the page.

2.

G $\frac{G}{F}$ $\frac{D^b}{E^b}$ $\frac{A^b}{B^b}$ $\frac{A^b_{sus}}{B^b}$

cresc. 3 *f* 3

38

This system contains the piano accompaniment for the second system. It features a complex harmonic structure with chords G, G/F, D^b/E^b, A^b2, and A^b_{sus}/B^b. The right hand (treble clef) has a triplet of eighth notes (Bb, A, G) and a quarter note (F). The left hand (bass clef) has a triplet of eighth notes (Bb, A, G) and a quarter note (F). A dynamic marking of *cresc.* is placed above the first measure, and *f* is placed above the second measure. A large watermark 'SAMPLE COPY' is overlaid on the page.

div. 3 3

was the weight of my sin, not the weight of the tree

This system contains the third two staves of music. The vocal line (treble clef) begins with a fermata and a '2.' marking. It features a triplet of eighth notes (Bb, A, G) followed by a quarter note (F) and a half note (E). The piano accompaniment (bass clef) mirrors this melody. A dynamic marking of *div.* is placed above the first measure. A large watermark 'SAMPLE COPY' is overlaid on the page.

$\frac{A^b}{C}$ $\frac{D^b}{C}$ $\frac{A^b}{C}$ $B^b m7$

3 3 3

41

This system contains the piano accompaniment for the third system. It features a complex harmonic structure with chords A^b/C, D^b, A^b/C, and B^bm7. The right hand (treble clef) has a triplet of eighth notes (Bb, A, G) and a quarter note (F). The left hand (bass clef) has a triplet of eighth notes (Bb, A, G) and a quarter note (F). A large watermark 'SAMPLE COPY' is overlaid on the page.

that was car - ried by Him. My guilt and dis -

45

Chords: D^b, E^b, A^b, G^b/A^b, A^b7, G^b/A^b, A^b7

grace Je - sus bore in my place,

48

Chords: D^b, A^b, C, B^bm7, Fm7, A^b, E^b

on Cal - va - ry's road, on Cal - va - ry's

51

Chords: D^bM7, A^b/E^b, E^bsus, A^b/E^b, D^bm6/E^b

building

road, on Cal - va - ry's road,

54

'neath the weight of the cross

57

SOLO (or CHOIR)

mf

rit.

on which the Prince of Glo - ry —

60

rit.

D^bM7 B^bD B^b7/D E^bsus E^b13 E^b7

died.

63

rit.

D^b2 A^b A^b2 A^b

Leo. *