

# You and You Alone

From the RiverSpring® volume:  
You Are Glorious

Words, Music, and Arrangement by  
DREW CLINE

Rock feel ♩ = 102

Em D/F# G Em D C2

*mf*

Em D/F# G

4

Em D C2

7

*mp*

We come be-fore you, O God. We stand be-fore your throne.

Em D/F# G Em D C2

*mp*

10

Permission granted – all photocopying rights within your church.  
Copyright © 2007 Tender Heart Music (ASCAP)/Big Loud Bucks.  
All Rights Reserved. Used by Permission.  
Published by RiverSpring Music • 1 866 859-7622



Musical staff for vocal line, measures 12-13. The melody begins with a quarter rest, followed by a quarter note G4, an eighth note A4, a quarter note B4, a quarter note C5, a quarter note B4, a quarter note A4, and a quarter note G4.

We long to praise you, Lord,

Piano accompaniment for measures 12-13. The right hand plays chords and moving lines, while the left hand provides a steady bass line. Chords are labeled as Em, D/F#, and G.

13

1

(to meas. 10)

Musical staff for vocal line, measures 14-15. The melody continues with a quarter note G4, an eighth note A4, a quarter note B4, a quarter note C5, a quarter note B4, a quarter note A4, and a quarter note G4.

and wor - ship you a - lone.

Piano accompaniment for measures 14-15. Chords are labeled as Em, D, and C2. The piece concludes with a double bar line and repeat dots.

16

2

*f*

Musical staff for vocal line, measures 16-17. The melody continues with a quarter note G4, an eighth note A4, a quarter note B4, a quarter note C5, a quarter note B4, a quarter note A4, and a quarter note G4. The final measure includes a dynamic marking of *f*.

and wor - ship you a - lone. You a - lone

Piano accompaniment for measures 16-17. Chords are labeled as Em, D, and C2. The piano part features a moving bass line and a final chord.

19

are sal-va - tion. You a-lone for-give our ways.

C2 G D Em7 C2 G

21

You a-lone are our ref - uge.

Dsus D C2 G D Em7

24

*2nd time to CODA ⊕ (meas. 43)*

*2nd time to CODA ⊕ (meas. 43)*

You are our hid - ing place. And we wor - ship you,

Am7 C2 Dsus D Am7 G/B

27

Soloist ad libs

you\_ and you\_ a - lone.

C D7sus Em D/F# G

30

*mf*

We are your peo - ple, O God,

Em D C2 Em D/F# G

*mf*

33

with bro - ken hearts\_ and bro - ken homes.

Em D C2

36

We need your heal - ing, Lord,

Em D F# G

39

D.S. al CODA

need you and you a - lone. You a - lone

You a - lone.

Em D C2

41

D.S. al CODA (to meas. 21)

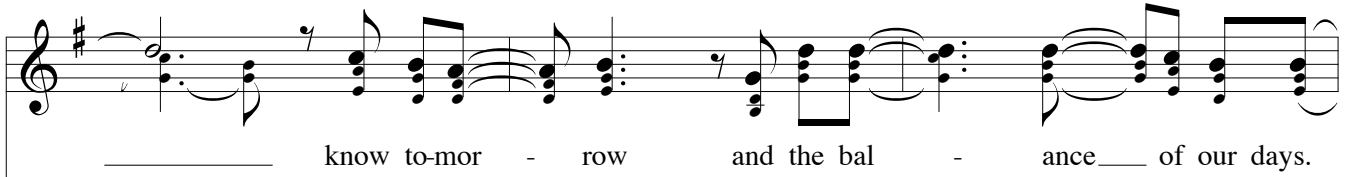
⊕ CODA

You are our hid - ing place. You a - lone

⊕ CODA

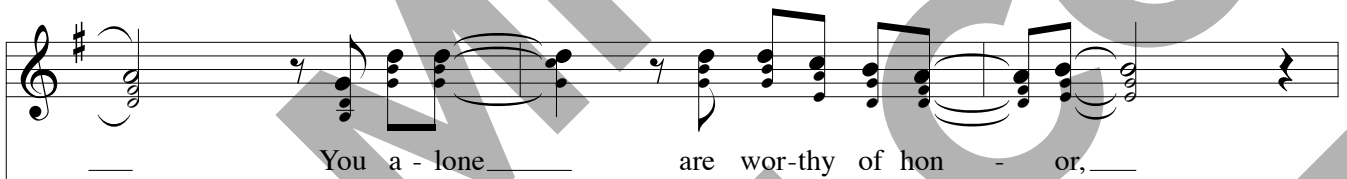
Am7 C2 Dsus D

43



C<sup>2</sup> G D Em<sup>7</sup> C<sup>2</sup> G

45



Dsus D C<sup>2</sup> G D Em<sup>7</sup>

48



*We wor - ship you,\_\_\_\_\_*

Am<sup>7</sup> C<sup>2</sup> Dsus D Am<sup>7</sup> G/B

51

you and you a - lone.

C D7sus Em D F# G

54

*Soloist ad libs*

We wor - ship you

Em D C2 Em D F# G

57

a - lone. We wor - ship you.

Em D C2

60

*mp*

You a - lone \_\_\_\_\_ are sal - va - tion. You a - lone \_\_\_\_\_

C2 G D Em7

63

\_\_\_\_\_ for - give our ways. \_\_\_\_\_ You a - lone \_\_\_\_\_ are our ref -

C2/E G Dsus C2 G/B

66

\_\_\_\_\_ - uge. \_\_\_\_\_ You are my hid - ing place. \_\_\_\_\_ You a - lone \_\_\_\_\_

Em7 Am7 C2 D/F# D

69

*cresc.*



\_\_\_\_\_ know to-mor - row and the bal - ance\_\_\_\_\_ of our days.

C<sup>2</sup> G D Em<sup>7</sup> C<sup>2</sup> G

72

\_\_\_\_\_ You a - lone\_\_\_\_\_ are wor - thy of hon - or, \_\_\_\_\_

Dsus D C<sup>2</sup> G D Em<sup>7</sup>

75

wor - thy of all\_\_\_\_\_ our\_\_\_\_\_ praise.\_\_\_\_\_ You a - lone\_\_\_\_\_

Am<sup>7</sup> G/B C Dsus D

78

*ff*

\_\_\_\_\_ are sal-va - tion. You a - lone \_\_\_\_\_ for-give our ways.

C2 G D Em7 C2 G

\_\_\_\_\_ You a - lone \_\_\_\_\_ are our ref - uge. \_\_\_\_\_

Dsus D C2 G D Em7

You are our hid - ing place. \_\_\_\_\_ And we wor - ship you, \_\_\_\_\_  
We wor - ship you \_\_\_\_\_

Am7 C2 Dsus D Am7 G/B

you and you alone. We wor - ship you

C D7sus Em D F# G

89

*Soloist ad libs to end*

a - lone. We wor - ship you.

Em D C2

91

We wor - ship you.

Em D F# G Em D C2

94