

# Walk Worthy of My Name

From the Worship Today® volume:  
To Our Most Worthy God

(Children's Choir)

Children's vocals only part is printable from the accompaniment CD

Words by  
NAN ALLEN

Music and Arrangement by  
DENNIS ALLEN

With energy ♩ = 122

D D/C# Bm7 G

*mf*

1.° We are heirs,-  
(2.° Pleas-ing him)-

D D/C# Bm7 G

5

9

9

7 chil - dren of the King. —  
in ev - ry thing we do —

D G/D D

We are called to be  
is the least we can do

Em7 D/F# G

12

like him in ev - 'ry way. We are his,  
for all that he has done. Giv-ing him

D G/D

14

a - dopt - ed through his Son, so  
the wor - ship of our lives, a

D G/D D

17

let us show our love  
liv - ing sac - ri - fice

Em<sup>7</sup> D/F# G

20

by how we live and o - bey. O sons and  
is what he asks of us.

A sus A

22

daugh - ters, hear the Fa - ther say, "Walk wor - thy of the name -

Em<sup>7</sup> G<sup>2</sup> D

25

27

— you bear. Walk wor - thy of — the name — we share. Bring

A<sup>7</sup><sub>sus</sub> Em<sup>11</sup> G

28

hon - or, — bring glo - ry, — bring your high - est

D Em<sup>11</sup> G

31

praise. Walk wor - thy of — the name — you bear. Walk

A<sub>sus</sub> D A<sup>7</sup><sub>sus</sub>

34

wor - thy of — the name — we share. Bring hon - or, — bring

Em<sup>11</sup> G D

37

glo - ry, — when you walk, — walk wor - thy of — my

Em<sup>11</sup> G G/A

40

1. name."

1. D D/C# Bm<sup>7</sup>

43

6

2.

Vocal staff for measure 6, showing a melodic line with a repeat sign and a second ending.

2. Pleasing him— name."

"Walk

G

2. D

Bb<sup>7</sup>sus

Piano accompaniment for measures 6-8, including chord symbols G, D, and Bb<sup>7</sup>sus.

46

49

Vocal staff for measure 49, starting with a new melodic phrase.

wor - thy of — the name — you bear. Walk wor - thy of — the name —

E<sup>b</sup>

Bb<sup>7</sup>sus

Fm<sup>11</sup>

Piano accompaniment for measures 49-51, including chord symbols E<sup>b</sup>, Bb<sup>7</sup>sus, and Fm<sup>11</sup>.

49

Vocal staff for measure 52, continuing the melodic line.

— we share. Bring hon - or, — bring glo - ry, —

A<sup>b</sup>

E<sup>b</sup>

Fm<sup>11</sup>

Piano accompaniment for measures 52-54, including chord symbols A<sup>b</sup>, E<sup>b</sup>, and Fm<sup>11</sup>.

52

bring your high - est praise. Walk wor - thy of — the name —

55

Ab Bbsus Eb

— you bear. Walk wor - thy of — the name — we share. Bring

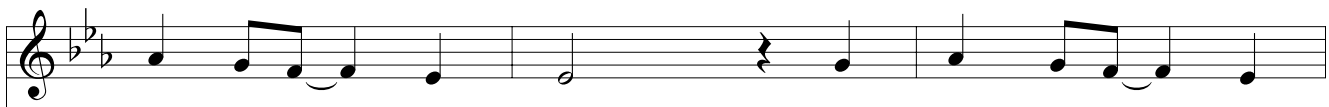
58

Bb7sus Fm11 Ab

hon - or, — bring glo - ry, — when you walk, — walk

61

Eb Fm11 Ab

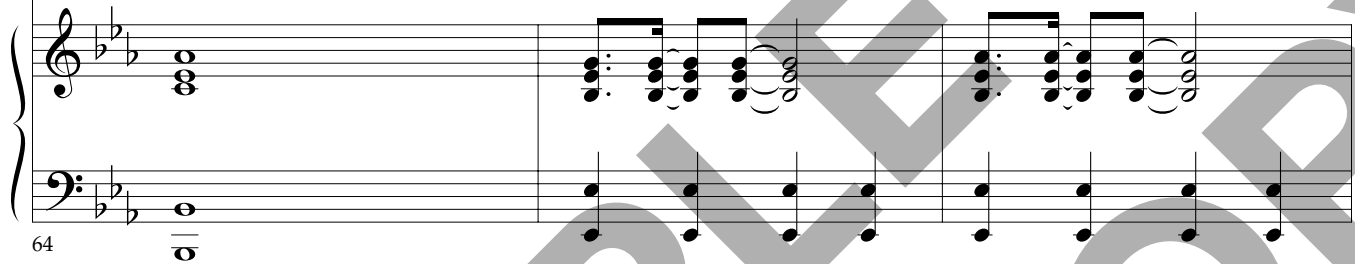


wor - thy of my name. Walk wor - thy of my

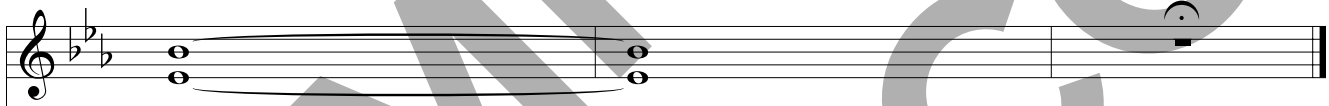
A $\flat$ /B $\flat$

E $\flat$

Ebsus



64



name."

E $\flat$

Ebsus

E $\flat$



67

DO NOT SAMPLE COPY